

Protimeter BLD5365 Surveymaster Moisture Meter

Protimeter Dual-Function Moisture Meter

- Wood • Drywall • Building Materials • Concrete • Fiberglass Boat Hulls



The Surveymaster™ can help building professionals—such as contractors, surveyors, home builders and architects - assess building moisture levels during new build and refurbishing activities.

Excessive moisture in buildings can lead to decay and deterioration of components and decorative finishes. Professionals involved with the identification, management and remedy of moisture need tools that help them to:

- Identify the extent of the moisture penetration
- Diagnose the cause of the problem
- Monitor change in the moisture level

Protimeter moisture meters and hygrometers satisfy these requirements comprehensively. The Surveymaster™ is the preferred industry choice for surveying and investigating moisture in buildings.

Features

- Rugged construction
- Large backlit display
- Pin moisture measurement
- Non-invasive measurement up to 20mm below the surface
- Wide range of accessory plugins
- Industry leading 2-year warranty

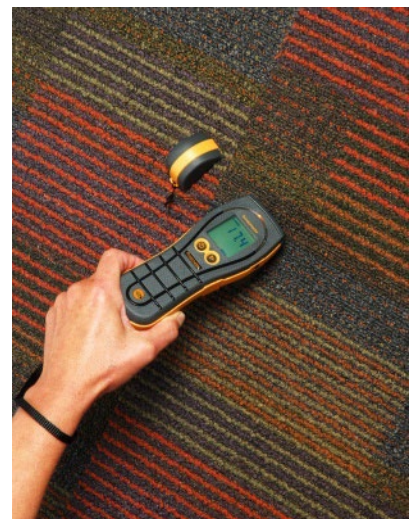
Benefits

- Easy-to-use
- Allows rapid assessment of building moisture
- Instant readings in a wide range of building materials
- Non-invasive measurement not adversely affected by surface moisture
- Two meters in one

Applications

When concise and accurate environmental readings need to be reported, the Surveymaster gets the job done. The ability to use both functions to instantly determine the potential evidence of excessive moisture makes this instrument ideal for many applications including:

- | | |
|---|--|
| <ul style="list-style-type: none"> • Building survey • Fire and flood restoration • Concrete and wood floor moisture measurement | <ul style="list-style-type: none"> • Indoor air quality • Environmental health |
|---|--|



Two Operational Modes

This reliable moisture meter has two modes of operation—search and measure. These functions can help the user to distinguish sub-surface from surface moisture, essential information when trying to establish the extent and cause of a dampness problem

Search Mode - Non-Invasive

The search mode is used to assess the moisture level beneath the surface of solid walls and floors independently of surface conditions. The nominal depth of the measurement is 20 mm; this depends on the density and other characteristics of the material being measured. When held against the surface, as shown below, the instrument transmits a signal into the material. The relative moisture level is shown on the digital display and its moisture condition is shown on the accompanying scale of color-coded lights. This measurement presentation helps the user to:

- Look for moisture behind wall and floor coverings, such as tile and vinyl.
- Assess, in relative terms, if the material is in a dry, borderline or damp condition.
- Map the extent of the problem numerically.
- Non-invasive pinless radio frequency finds moisture at depth where moisture is not always directly visible—up to 25 mm below the surface.
- This mode of measurement is not adversely affected by the presence of surface moisture.

Applications: Shower pans, behind ceramic tile, fine finishes, water stains, tile and vinyl floor coverings, joists, around toilets, drywall, below grade floors and walls, plaster, masonry, concrete and concrete block.

Note: Metal additives in concrete can create false positive readings.

Measure Mode - Pin-Type

This mode is used to measure the moisture level at the surface and at incremental depth, when used with the auxiliary probes. Measure mode readings are precise and specific to the immediate area of contact of the electrodes. The actual moisture content of wood is shown on the digital display with the corresponding moisture condition shown on the accompanying scale of color-coded lights. Wood Moisture Equivalent (WME) values are shown for other non-conductive, porous building materials.

- Pin-type probes measure moisture in wood and other building materials (use provided wood species calibration chart for more precise readings)
- Deep wall probes establish the presence of moisture in wall cavity insulation, sub and surface structures

Options

- Exterior Insulation and Finished Systems (EIFS) probe finds moisture in exterior insulation finishing systems
- Hammer electrode for wood floor applications

Applications: Wood and wood floors, subfloors, drywall, concrete and concrete block, stucco, plaster, masonry and EIFS.

Reference mode (Patent Pending)

In both Pin and Search mode, GE's patent pending Reference Mode can be used. Reference mode can be useful when trying to establish what materials are above or below a point of reference or dry standard.

Measure the dry standard or baseline material until the meter's reading is stable then press for seconds. This will store the reading until the mode changes of the meter turns off. Now all readings taken after will be displayed as normal, but below you will see a second reading that shows you if the material is measured above or below the original reading.



Technical Specifications

Rapid, non-invasive and pin moisture evaluation in building materials. Detects moisture directly in materials such as concrete and below wall and floor coverings such as tile, wood and vinyl

Range	Relative (non-invasive)		70 to 999
		Dry (green)	70-169
		At risk (yellow)	170-199
	Pin Measurement	Wet (red)	200-999
			7.9% to 99% WME
		Dry (green)	7-16.9
Display	Display 1	Display 2	60 LEDs green (dry), yellow (at risk) and red (wet)
			Digital LCD backlit
Depth of moisture	Non-invasive		up to 20 mm
	Pin		up to 12.5 mm
Case	Pouch with belt loop		
Power	9 V (supplied)		
Warranty	2 years on mechanical or manufacturing defects.		
	Does not include wearing part or accessories.		
Part Number	BLD5365		
Weight	225g (including Batteries)		
Dimensions	190mm x 70mm x 49mm		
Battery	One 9 V 6F22R		
User adjustable features:	Auto shut off 1-6 mins		
	Hold feature		
	Backlight on/off		
	Audible on/off		
	Dry, At Risk and Wet Indicator on/off		



Packing List

Protimeter BLD5365 Surveymaster Moisture Meter
Auxiliary HD MC Probe
Deep Wall Probe 127mm
Wrist Strap
Calibration Check Device
Protimeter Soft Pouch
Battery: 1 x 9V
Wood Species Calibration Table Leaflet
Two Spare Pins
Instruction Manual



Accessories

BLD5020	Deep Wall Probes (240 mm) - fits all Protimeter Minis, Timbermasters & Surveymasters
BLD5000	Hammer Electrode - Plugs into Protimeter Minis, Survey and Timber Masters - Penetrates 37 mm
BLD5055	Hammer Electrode - Heavy Duty Design
BLD5070	EIFS Probe

Video



YouTube Video - Using the Protimeter Surveymaster to search and measure moisture
 (Click on the image to the left to view the video)

The Protimeter Surveymaster uses both pin and non-invasive moisture measurement modes. This video describes how to use both modes to evaluate moisture in a building.