

# Protimeter BLD5777 Reachmaster Pro

For Use With:

- Wood • Drywall • Building Materials • Concrete • Fiberglass Boat Hulls



No more climbing ladders, or working on your hands and knees, like you would with conventional moisture meters!

The ReachMaster Pro is a non-invasive moisture meter enabling the rapid assessment of moisture conditions in buildings.

Typical initial moisture surveys can increase inspection time by up to 60%, but the ReachMaster Pro makes measurements of floors, hard to reach walls and ceilings quick, safe and easy. Along with unrivaled depth of measurement and sensitivity adjustment.

All Protimeter instruments have a two-year warranty.

## Features

- Non-invasive moisture measurement
- Wireless communication between sensor head and display
- Telescopic handle adjusts from 685mm to 1219mm
- Depth of Measurement: Up to 120mm - Varies with material under test
- Color Display: Tilt-adjustable with red, yellow and green zones
- Measurement Range: 60-999 ppm
- Audible alarm & Auto shut-off
- Adjustable sensitivity to focus in on moisture source
- Multi-language menu & Simple field recalibration
- Replaceable sensor wear plate with wear indicator on abrasion plate (1 spare included)
- Battery Life: 80 hours on continuous operation
- Battery Requirements: 4x AA in display unit, 2x AA batteries in sensor head
- Firmware upgradeable by user as new features become available

## Benefits

- Easy and quick moisture detection on floors, walls and ceilings
- Eliminates working on hands and knees, as well as climbing ladders
- Not adversely affected by surface moisture
- Significantly quicker moisture assessment than handheld meters

## Applications

- Flood damage restoration
- Flooring inspection
- Home inspection
- EIFS inspection
- Rubber roof leak detection
- Fiberglass marine hull inspection



## Technical Specifications

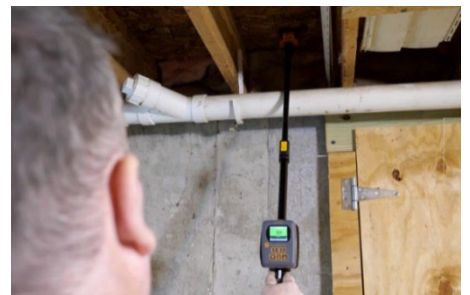
<b>Model</b>	<b>Protimeter BLD5777 Reachmaster Pro</b>
Operating Conditions	Temperature: 0°C to 50°C
Measurement Specifications	Non-invasive, instantaneous readings Surface moisture is not adversely affected
Measurement Depth (Varies with Material Under Test)	Maximum: 120mm Minimum: 70mm
Measurement Range	60 ppm to 999 ppm
Power Requirements	Sensor Head: 2x AA Alkaline Batteries ~ 2700mAH Display Module: 4x AA Alkaline Batteries ~ 2700mAH
Battery Indications	Battery level indication on display unit Battery low LED indication on sensor unit Battery level indication on display
Gross Weight	700g - Instrument only
Regulatory Compliance	CE, RoHS, ETL
User Interface	Display Graphical LCD Size: 50mm Resolution: 176 X 220 Backlight (with adjustable brightness) User application profiles Sticky memory, last used application settings

## Packing List

Protimeter BLD5777 Reachmaster Pro  
Instruction Manual

## Accessories

Part Number	Description
BLD5777-D	Display Unit - Reachmaster pro with screws
BLD5777-S	Sensor Unit - Reachmaster Pro with screws
BLD5777-P	Extension Pole - Reachmaster Pro
BLD5777-HD	Hinge for Display - Reachmaster Pro with screws
BLD5777-HS	Hinge for Sensor - Reachmaster Pro with screws
BLD-5777-D-Cap	Battery Cap for Display - Reachmaster Pro
BLD-5777-S-Cap	Battery Cap for Sensor - Reachmaster Pro
BLD5777-A	Abrasion Plate Kit - Reachmaster Pro with screws



## Video



**YouTube Video - Introduction to Protimeter Reachmaster Pro | Non-Invasive Extendable Moisture Meter!**  
(Click on the image to the left to view the video)

No more climbing ladders, or working on your hands and knees!

The Protimeter ReachMaster Pro is a non-invasive extendable moisture meter enabling the rapid assessment of moisture conditions in buildings, featuring a telescopic handle and wireless communication between the sensor head and display.

Typical initial moisture surveys can increase inspection time by up to 60%, but the ReachMaster Pro makes measurements of floors, hard to reach walls and ceilings quick, safe and easy. Along with unrivaled depth of measurement and sensitivity adjustment.