

Surveymaster Moisture Meter

BLD5360

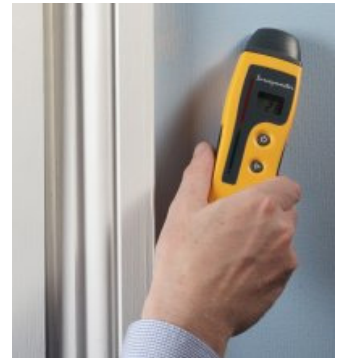
The dual mode moisture meter



The **NEW** Surveymaster is easier to use and gives more information than its predecessor. It incorporates two modes of operation - Search and Measure - that enable the user to distinguish surface moisture from sub-surface moisture, essential information when trying to establish the extent and cause of a dampness problem.

Moisture level values are shown on a digital display along side a scale of colour coded lights that indicate the moisture condition of the material. This combined presentation of moisture measurement helps the user to map the extent of problems and monitor changes in condition precisely and reliably.

Search Mode The Surveymaster has a radio frequency moisture sensor located in a bulge at the top of the instrument. This is held against a surface to obtain a relative qualitative indication of the moisture level within the material / beneath the surface. In this way the user can establish if there are high moisture levels within material that warrant more detailed investigation. This technique is fast and does not mark or damage surfaces. The Search Mode uses the same colour coded LED scale as the Measure mode, identifying degrees of dampness below the surface up to 15 cm. There is also a user adjustable Audible Alarm that sounds to indicating the varying levels in moisture. In this mode the instrument employs radio frequency emissions (RFE) to measure moisture through most wall and floor coverings, including ceramic tiles.



Measure Mode By pushing two electrode needles into materials, a precise moisture measurement can be obtained. Actual moisture content values for wood and wood moisture equivalent (%WME) values for masonry are displayed together with text messages that tell the user if the material is in a dry, borderline or damp condition. If high moisture readings have been detected beneath the surface in Search mode, the Deep Wall Probes are used to quantify the moisture levels at varying depths : 10 mm with Pins and to 140 mm with Deep Wall Probes or more on request.

The two-pin Measure Mode identifies by means of green, yellow and red LEDs whether a surface is in a safe i.e. air-dry, borderline or damp condition. The dampness measured is quantified on an LCD display to one decimal place.



Accessories

Whilst in the measure mode the meter can be used with: A two-pin remote probe and lead is included for awkward corners and under work surfaces.

A set of 'Deep Wall Probes' that are insulated but for their tips providing quantitative WME readings at depth, regardless of surface dampness and surface contamination by salts.

An optional Hammer Electrode (BLD5000) for quick and easy measurement at depth of the moisture content of timber. The instrument is supplied with pouch, moisture probe, deep wall probes, 'calcheck' and wood calibration table.

Specifications

	Measure Mode :	Search Mode :
Measurement Range :	6% to well above fibre saturation in wood and beyond (to nominal 1000)	Relative, colour-coded
Depth :	10mm with Pins / up to 140 or more with Deep Wall Probe	up to 15 cm
Calibration :	Wood moisture equivalent	Relative
Resolution :	LCD +/- 0.1%	Not applicable
Operating Temp Range :	-10 to 45 deg C	
Display :	Three-digit LCD and synchronised green, yellow and red LED display	Green, yellow and red LED's
Audible Alarm :	Search Mode only - adjustable synchronised with LED display	
Instrument size & weight :	165 x 52 x 40 mm; 200g	
Powered by :	Two LR6 batteries	