

Elcometer 4695 Leneta Test Charts

Can be used in accordance with:
AS/NZS 1580.213.1, ASTM D 344, ASTM D2805, ASTM D 2486,
ASTM D 5150, ASTM D 6441, BS 3900-D4*, DIN 53162-2, FTMS 141 4121, ISO 2814



Elcometer supplies a wide range of Leneta Test Charts, from plain white to those having different patterns of black and white. Made from naturally bright, non-fluorescent white paper, these charts contain no optical brighteners that can affect instrumental color measurements.

Leneta Test Charts are the market standard in today's coatings industry. Foil Card substrates of steel, aluminum, glass and plastic are also available. Leneta Test Charts are available in boxes & cases.

* Standards not in bold have been superseded but are still recognised in some industries

Opacity Charts

The term "Opacity Chart" refers to charts on which the test pattern is a simple combination of black and white areas, large enough for wider aperture reflectance instruments, as well as for visual opacity and colour observations.

Used to test the hiding power of the coating, using large black and white areas.

Technical Specifications

| Part Number | Description | Chart Dimensions | Box Weight | Quantity per Box | Boxes per Case | |
|--------------|--------------|------------------|--------------|------------------|----------------|---|
| Box | Case | | | | | |
| K0004695M003 | K0004695M203 | Leneta Chart 2A | 140 x 254 mm | 2.72 | 250 | 6 |
| K0004695M004 | - | Leneta Chart 2C | 194 x 260 mm | 4.08kg | 250 | 4 |
| K0004695M006 | K0004695M206 | Leneta Chart 3B | 194 x 289 mm | 4.08kg | 250 | 4 |
| K0004695M015 | K0004695M215 | Leneta Chart 5C | 194 x 260 mm | 4.08kg | 250 | 4 |



Form 2A



Form 2C



Form 3B



Form 5C

Brushout Charts

The Elcometer 4695 Brushout Cards are designed for informal brushout applications; thicker paper is used for the testing of coatings applied with a brush or roller. The paper stock is almost twice the thickness of regular chart paper to give greater rigidity for more convenient handling - nominal thickness 0.5mm.

Brushout Cards are also used widely for drawdowns and colorimetric measurements.

Technical Specifications

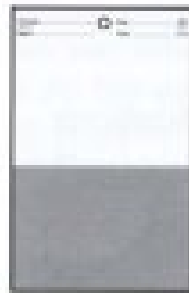
| Part Number | Description | Chart Dimensions | Box Weight | Quantity per Box | Boxes per Case | |
|--------------|--------------|------------------|-------------|------------------|----------------|---|
| Box | Case | | | | | |
| K0004695M005 | K0004695M205 | Leneta Chart 2DX | 98 x 152 mm | 3.18kg | 500 | 4 |
| K0004695M016 | K0004695M216 | Leneta Chart 5DX | 98 x 152 mm | 3.18kg | 500 | 4 |
| K0004695M102 | K0004695M302 | Leneta Chart WDX | 98 x 152 mm | 3.18kg | 500 | 4 |



Form 2DX



Form 5DX



Form 5DX-GW



Form WDX

Duplex Applicator Charts

Originally made to be used with Duplex Film Applicator, the Elcometer 4695 Duplex Applicator Charts are designed for rapid production of side-by-side drawdowns, they now serve mostly as generic paint test charts.

Technical Specifications

| Part Number | Description | Chart Dimensions | Box Weight | Quantity per Box | Boxes per Case | |
|--------------|--------------|------------------|-------------|------------------|----------------|---|
| Box | Case | | | | | |
| K0004695M019 | - | Leneta Chart 6F6 | 76 x 184 mm | 2.27kg | 500 | 6 |
| K0004695M103 | K0004695M303 | Leneta Chart WF | 76 x 184 mm | 2.27kg | 500 | 6 |



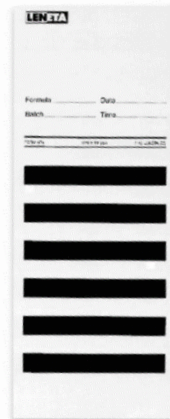
Form 6F6



Form 6F4



Form WF



Form 6F6

Display Charts / Spreading Rate

The Elcometer 4695 Display/ Spreading Rate Charts employ time-tested, diagonally striped patterns, having a strong visual impact that emphasises variations in film opacity.

They are frequently used for hiding power display purposes, by means of drawdowns or brushouts. Spreading Rate Charts (Form 8H) are accurately 0.1 square metres (approximately one square foot) in area and are used in brushout hiding tests at specified spreading rates as described in ASTM Method D 344.

Technical Specifications

| Part Number | Description | Chart Dimensions | Box Weight | Quantity per Box | Boxes per Case | |
|--------------|--------------|------------------|--------------|------------------|----------------|---|
| Box | Case | | | | | |
| K0004695M022 | K0004695M222 | Leneta Chart 8B | 194 x 289 mm | 4.08kg | 250 | 4 |
| K0004695M023 | K0004695M223 | Leneta Chart 8H | 286 x 438 mm | 5kg | 125 | 4 |



Form 8A



Form 8B



Form 8K



Form 8H



Form 8H-GW



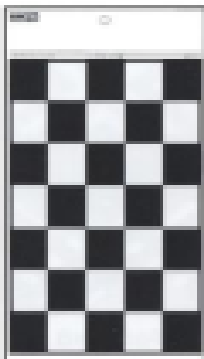
Form 8K-GW

Checkerboard Charts

The Elcometer 4695 Checkerboard Charts are black and white checkerboard pattern charts used in drawdown hiding tests. One of the earliest hiding power test surfaces was linoleum with a black and white checkerboard pattern, this was soon replaced by sealed paperboard charts.

Technical Specifications

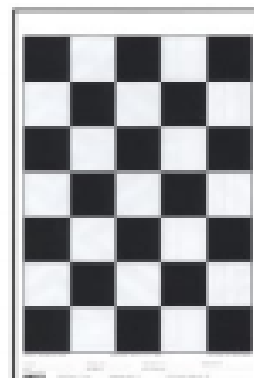
| Part Number | Description | Chart Dimensions | Box Weight | Quantity per Box | Boxes per Case | |
|--------------|-------------|------------------|--------------|------------------|----------------|---|
| Box | Case | | | | | |
| K0004695M030 | - | Leneta Chart 10B | 194 x 289 mm | 4.08kg | 250 | 4 |



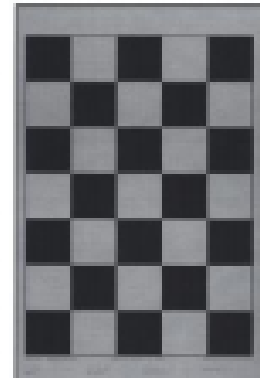
Form 10A



Form 10B



Form 10H



Form 10H-BG

Plain White & Plain Black Charts

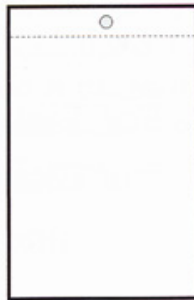
Designed for informal brushout applications, thicker paper is used for the testing of coatings applied with a brush or roller.

The paper stock is almost twice the thickness of regular chart paper to give greater rigidity for more convenient handling - nominal thickness 0.5mm.

Brushout Cards are also used widely for drawdowns and colourimetric measurements.

Technical Specifications

| Part Number | Description | Chart Dimensions | Box Weight | Quantity per Box | Boxes per Case | |
|----------------------|--------------|------------------|--------------|------------------|----------------|---|
| Box | Case | | | | | |
| Card thickness 0.5mm | | | | | | |
| K0004695M102 | K0004695M302 | Leneta Chart WDX | 98 x 152 mm | 3.18kg | 500 | 4 |
| Card thickness 0.3mm | | | | | | |
| K0004695M098 | K0004695M298 | Leneta Chart WA | 140 x 254 mm | 2.72kg | 250 | 6 |
| K0004695M103 | - | Leneta Chart WF | 76 x 184 mm | 2.27kg | 500 | 6 |
| K0004695M107 | K0004695M307 | Leneta Chart WK | 219 x 286 mm | 5kg | 250 | 4 |
| K0004695M049 | K0004695M249 | Leneta Chart BH | 286 x 438 mm | 5kg | 125 | 4 |
| K0004695M050 | K0004695M250 | Leneta Chart BK | 219 x 286 mm | 5kg | 250 | 4 |



Form WDX

Unvarnished Test Charts

The Elcometer 4695 Unvarnished Test Charts are ideal for testing applications of clear coatings and stains. The unvarnished (semi-porous) surface simulates wood or unsealed wallboard.

Technical Specifications

| Part Number | Description | Chart Dimensions | Box Weight | Quantity per Box | Boxes per Case | |
|--------------|--------------|------------------|--------------|------------------|----------------|---|
| Box | Case | | | | | |
| K0004695M064 | K0004695M264 | Leneta Chart N2A | 140 x 254 mm | 2.72kg | 250 | 6 |



Form N2C



Form N2A



Form N9A

Metopac™ Metal Test Panels

The Elcometer 4695 Metopac Metal Test Panels are painted steel panels, used for measuring the hiding power of powder coatings and industrial enamels. Available in half black/half white and all black.

Black surface:

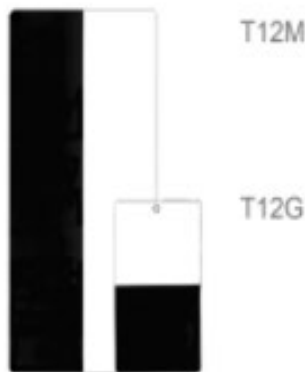
Solvent Resistant, Non bleeding, Reflective
1% max measured according to ASTM Method E1347

White surface:

Solvent Resistant, Colour Retentive, Reflective, Reflectance
80% min measured according to ASTM Method E1347

Technical Specifications

| Part Number | | Description | Chart Dimensions | Box Weight | Quantity per Box | Boxes per Case |
|--------------|--------------|-------------------|------------------|--------------|------------------|----------------|
| Box | Case | | | | | |
| K0004695M094 | K0004695M294 | Leneta Panel T12G | 76 x 132 mm | 3.63kg (8lb) | 125 | 4 |
| K0004695M095 | K0004695M295 | Leneta Panel T12M | 132 x 279 mm | 1.81kg (4lb) | 50 | 4 |



Spray Monitors - Self Adhesive Hiding Power

The Elcometer 4695 Spray Monitors are pressure sensitive labels with a hiding power test pattern and a sealed, solvent-resistant surface.

They are used primarily with metal panels on which the panel alone provides no visual clue as to the thickness of the applied paint film.

When placed on such a surface the Monitor presents a contrasting feature by which to observe how well the coating hides the surface, thereby facilitating film thickness control. It adheres firmly whether air-dried or baked, to present a permanent visual record of film opacity.

Technical Specifications

| Part Number | | Description | Chart Dimensions | Box Weight | Quantity per Box | Boxes per Case |
|--------------|--------------|--------------------------|------------------|------------|------------------|----------------|
| Box | Case | | | | | |
| K0004695M059 | K0004695M259 | Leneta Spray Monitor M33 | 51 x 51 mm | 0.91kg | 500 | 4 |
| K0004695M056 | K0004695M256 | Leneta Spray Monitor M12 | 25 x 25 mm | 0.91kg | 2000 | 4 |
| K0004695M063 | K0004695M263 | Leneta Spray Monitor M72 | 51 x 279 mm | 2.72kg | 500 | 4 |



Scrub Test Panels

In a typical scrub test, the coating is applied to the Leneta Scrub Test Panel at a specified film thickness, allowed to dry and then subjected to scrubbing with a straight-line scrub tester.

When used in accordance with ASTM D2486, Method A, a 10mil shim is inserted under the panel to accelerate failure and thereby reduce testing time. The scrub resistance is the number of scrub cycles required to remove the coating to a specified end point.

Alternatively, the loss in weight is determined after a specified number of scrub resistance cycles, with calculation of equivalent loss in film thickness.

These Scrub Test Panels are ideal for use with the Elcometer 1720 Washability & Abrasion Testers.

Technical Specifications

| Part Number | Description | Chart Dimensions | Box Weight | Qty per Box | Boxes / Case | |
|--------------|--------------|---------------------------------|--------------|-------------|--------------|---|
| Box | Case | | | | | |
| K0004695M068 | K0004695M268 | Black Scrub Test Panel P121-10N | 165 x 432 mm | 0.91kg | 100 | 5 |
| K0004695M069 | K0004695M269 | White Scrub Test Panel P123-10N | 165 x 432 mm | 0.91kg | 100 | 5 |

Accessories

KT001720P012 ASTM Test Foil 250µm



Grey Scale Charts

The Elcometer 4695 Grey Scale Charts are sealed paint test charts with six stripes on a white field, ranging in shade from very light grey to black.

The stripes are numbered 1 to 6, representing uniform steps of increasing contrast.

The hiding power of the applied coatings is rated as the number of the darkest stripe that is completely (or almost completely) obscured, at a specified thickness or spread rate.

Form CU-1 is used for more practical large-area brush or roller applications as in ASTM D5150. Applications on Form 24B are made with a drawdown blade.

Technical Specifications

| Part Number | Description | Chart Dimensions | Box Weight | Quantity per Box | Boxes per Case | |
|--------------|--------------|-------------------|--------------|------------------|----------------|---|
| Box | Case | | | | | |
| K0004695M053 | - | Leneta Chart CU-1 | 610 x 946 mm | 22.68kg | 100 | 1 |
| K0004695M043 | K0004695M243 | Leneta Chart 24B | 194 x 289 mm | 4.08kg | 250 | 4 |



Packing List

Elcometer 4695 Leneta Test Charts

Charts can be used with the Elcometer 4340 Motorised Film Applicator

